

PHOTOMETRIC TEST REPORT

KETA POLISHED CHROME

astro

LIGHT EFFICIENCY:

47 Lumen/Watt

LIGHT QUALITY:

CRI: 95.4

COLOR TEMPERATURE:

2705 K

OUTPUT: 155 lm

PEAK: 493 cd

POWER: 3.3 W

PF: 0.48

Tracking number: [n/a](#)

Product name:

Keta Polished Chrome

Item number:

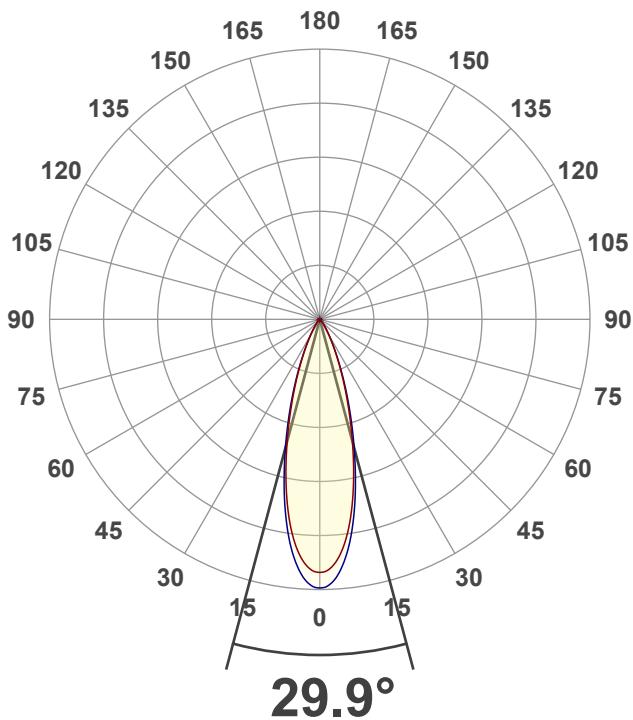
1437006

Date and time:

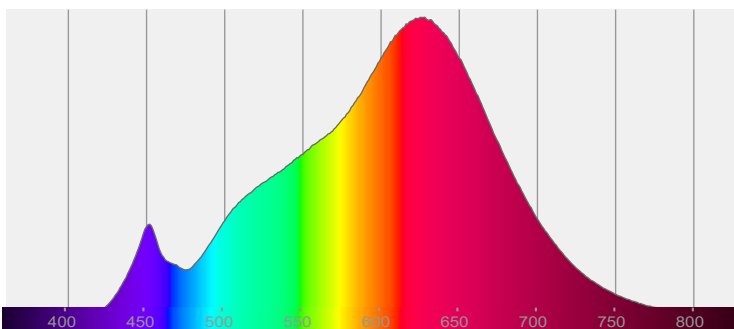
22/10/2021 12:56:39

Description:

IP20 LED Reading Light with USB

CIE 1931
x: 0.461
y: 0.412

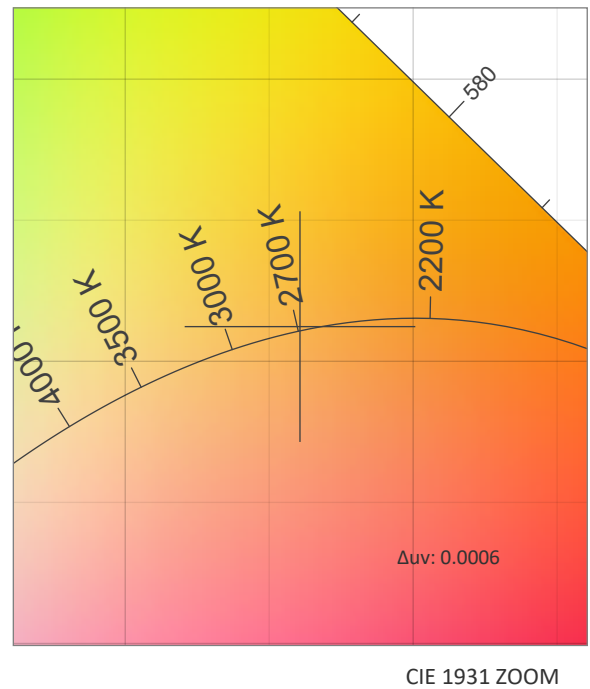
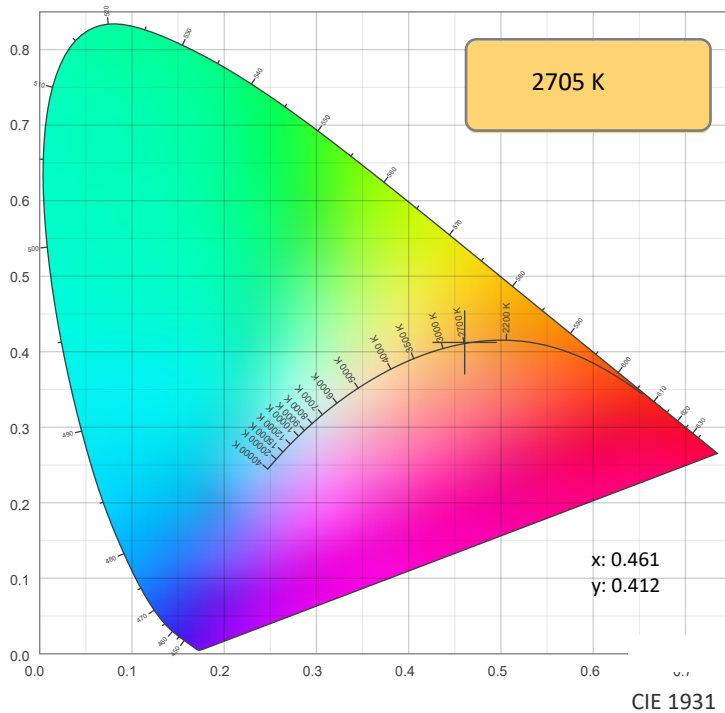
SPECTRA



POWER

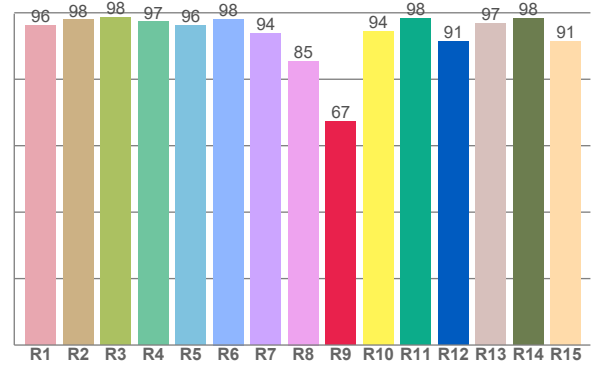
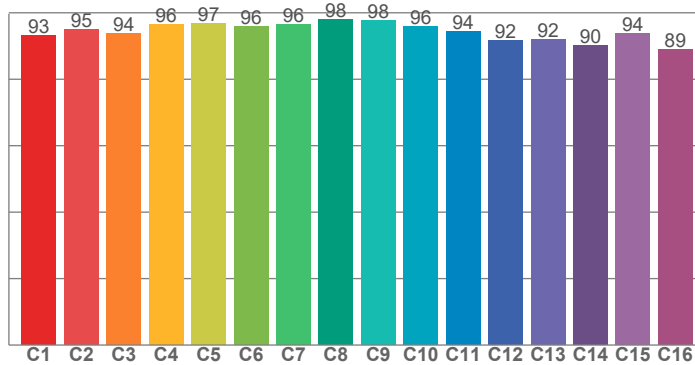


COLOR DETAILS



TM30: 94.5

CRI: 95.4 (R1-R8)



CRI R values, only R1-R8 are used to calculate final CRI value

R1	R2	R3	R4	R5	R6	R7	R8	R9	R10	R11	R12	R13	R14	R15
96.1	97.8	98.5	97.3	96.3	98.1	93.7	85.5	67.3	94.3	98.3	91.2	96.7	98.2	91.3

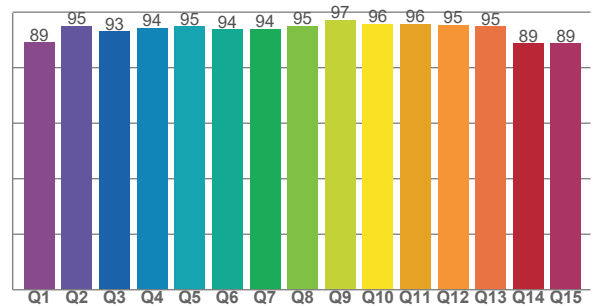
TM30 C values, 16 binned values out of total of 99 C values

C1	C2	C3	C4	C5	C6	C7	C8	C9	C10	C11	C12	C13	C14	C15	C16
93.2	94.9	93.8	96.5	96.6	95.8	96.5	98.0	97.7	95.9	94.4	91.7	92.0	90.1	93.7	88.9

CQS Q values

Q1	Q2	Q3	Q4	Q5	Q6	Q7	Q8	Q9	Q10	Q11	Q12	Q13	Q14	Q15
89.1	95.0	93.1	94.3	94.8	93.7	93.9	94.9	97.0	95.6	95.7	95.4	94.7	88.7	88.7

CQS: 92.9



COLOR PARAMETERS

Color temperature	Color rendering index	Red component	Color fidelity	Color gamut	Color quality scale	Color coordinate cie 1931	Color coordinate cie 1931	Color coordinate	Color coordinate	Color deviation from black body
CCT	CRI	CRI R9	TM30 Rf	TM30 Rg	CQS	x	y	u	v	Δuv
2705 K	95.4	67.3	94.5	100.0	92.9	0.461	0.412	0.262	0.352	0.0006

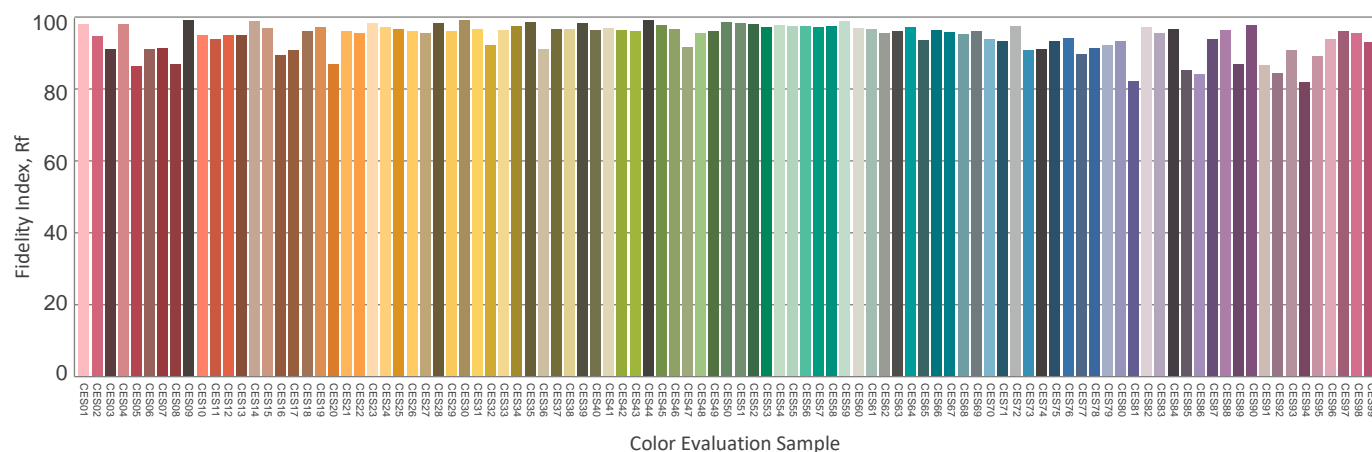
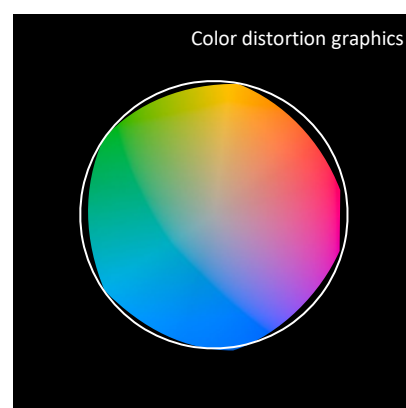
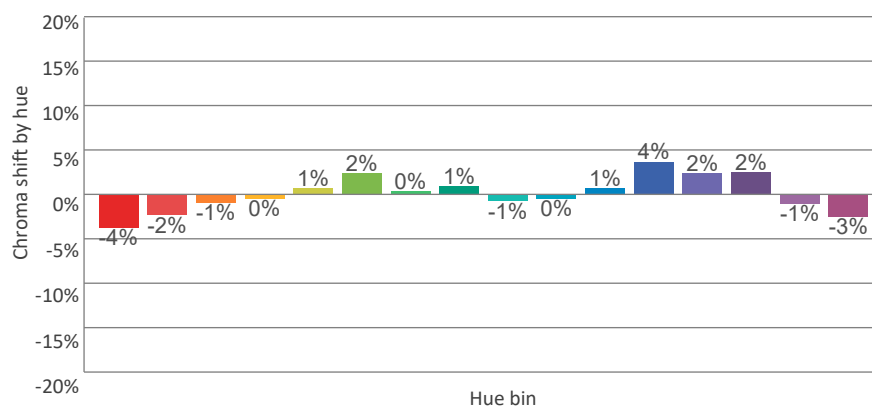
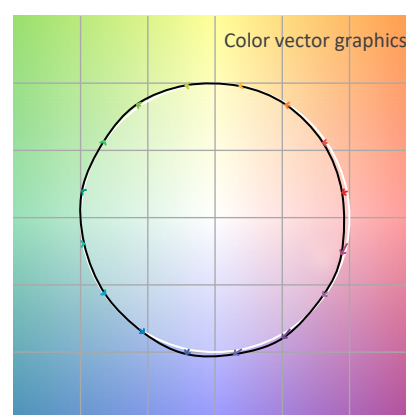
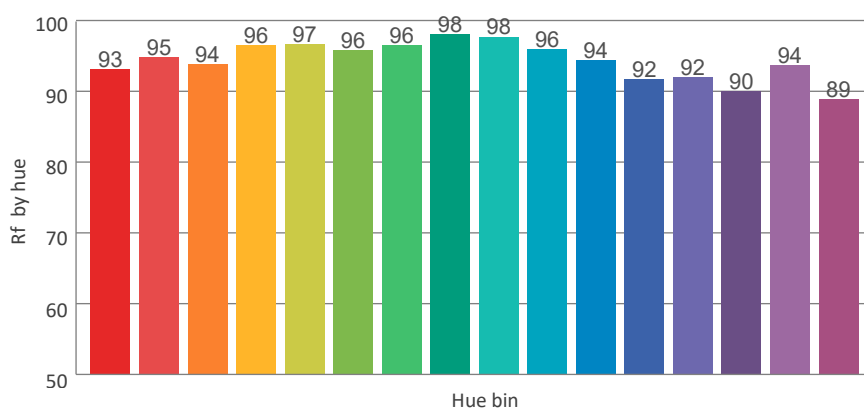
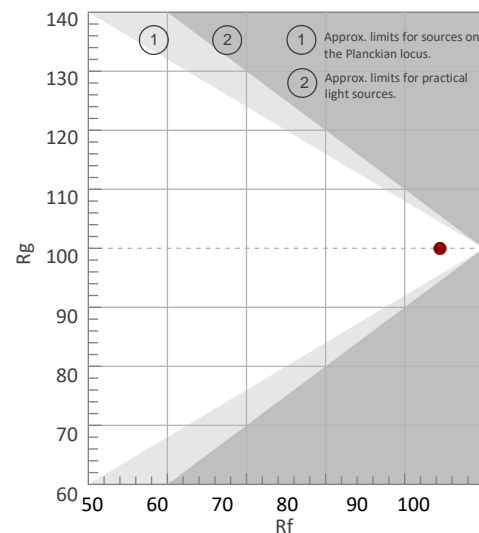
Rf 94.5

Fidelity index Rf

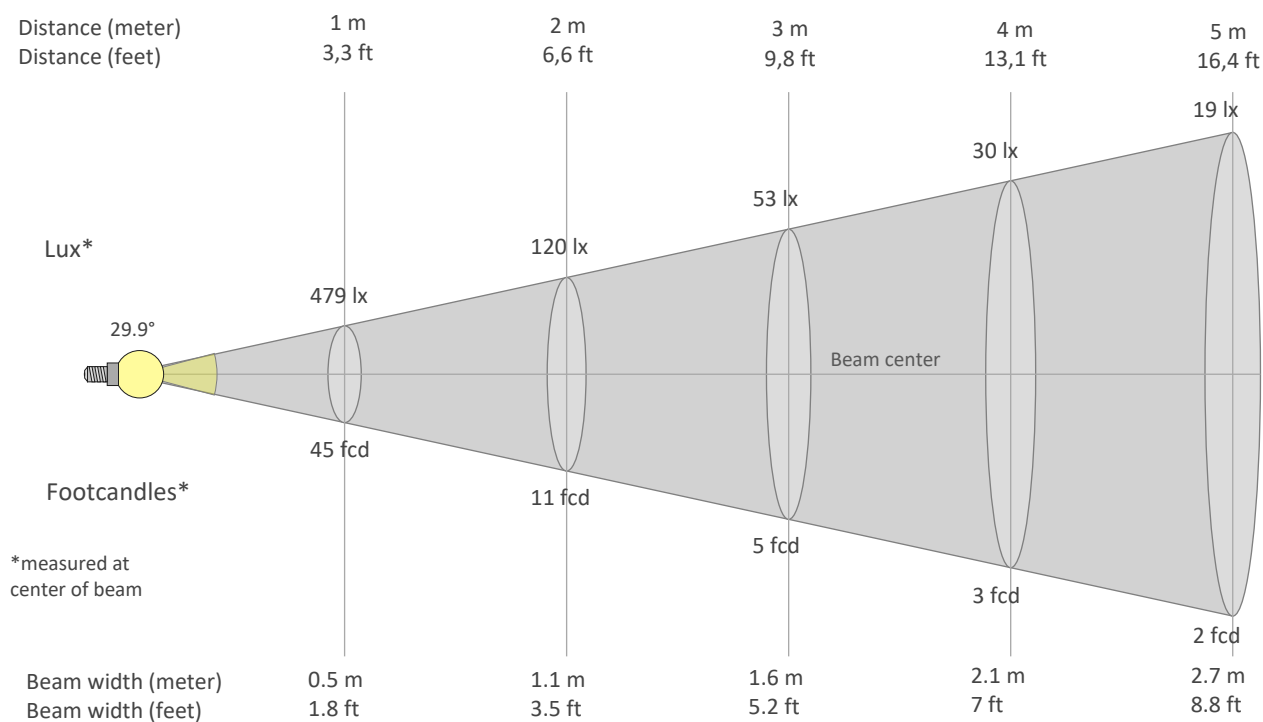
Rg 100.0

Gammut index Rg

		Graphic shifts (%)	
Hue Bin	Rf	Chroma	Hue
1	93	-4%	0%
2	95	-2%	2%
3	94	-1%	3%
4	96	0%	1%
5	97	1%	2%
6	96	2%	1%
7	96	0%	-2%
8	98	1%	0%
9	98	-1%	0%
10	96	0%	2%
11	94	1%	4%
12	92	4%	-1%
13	92	2%	-6%
14	90	2%	-8%
15	94	-1%	-4%
16	89	-3%	-8%



BEAM DETAILS



Beam intensities from 1-20m

1m	2m	3m	4m	5m	6m	7m	8m	9m	10m	11m	12m	13m	14m	15m	16m	17m	18m	19m	20m
3.3ft	6.6ft	9.8ft	13.1ft	16.4ft	19.7ft	23ft	26.2ft	29.5ft	32.8ft	36.1ft	39.4ft	42.7ft	45.9ft	49.2ft	52.5ft	55.8ft	59.1ft	62.3ft	65.6ft
479lx	120lx	53lx	30lx	19lx	13lx	10lx	7lx	6lx	5lx	4lx	3lx	3lx	2lx	2lx	2lx	2lx	1lx	1lx	1lx
44.5fcd	11.1fcd	4.9fcd	2.8fcd	1.8fcd	1.2fcd	0.9fcd	0.7fcd	0.5fcd	0.4fcd	0.4fcd	0.3fcd	0.3fcd	0.2fcd	0.2fcd	0.2fcd	0.2fcd	0.1fcd	0.1fcd	0.1fcd

Intensities in 0° c-plane

0°	2°	4°	6°	8°	10°	12°	14°	16°	18°	20°	22°	24°	26°	28°	30°	32°	34°	36°	38°
479	459	444	418	384	343	298	253	210	170	136	106	81	62	47	35	26	19	14	11
100%	96%	93%	87%	80%	72%	62%	53%	44%	36%	28%	22%	17%	13%	10%	7%	5%	4%	3%	2%

Intensities in 90° c-plane

0°	2°	4°	6°	8°	10°	12°	14°	16°	18°	20°	22°	24°	26°	28°	30°	32°	34°	36°	38°
479	488	470	442	406	362	315	267	221	180	143	111	85	64	47	35	25	19	14	10
100%	102%	98%	92%	85%	76%	66%	56%	46%	38%	30%	23%	18%	13%	10%	7%	5%	4%	3%	2%

Intensities in 180° c-plane

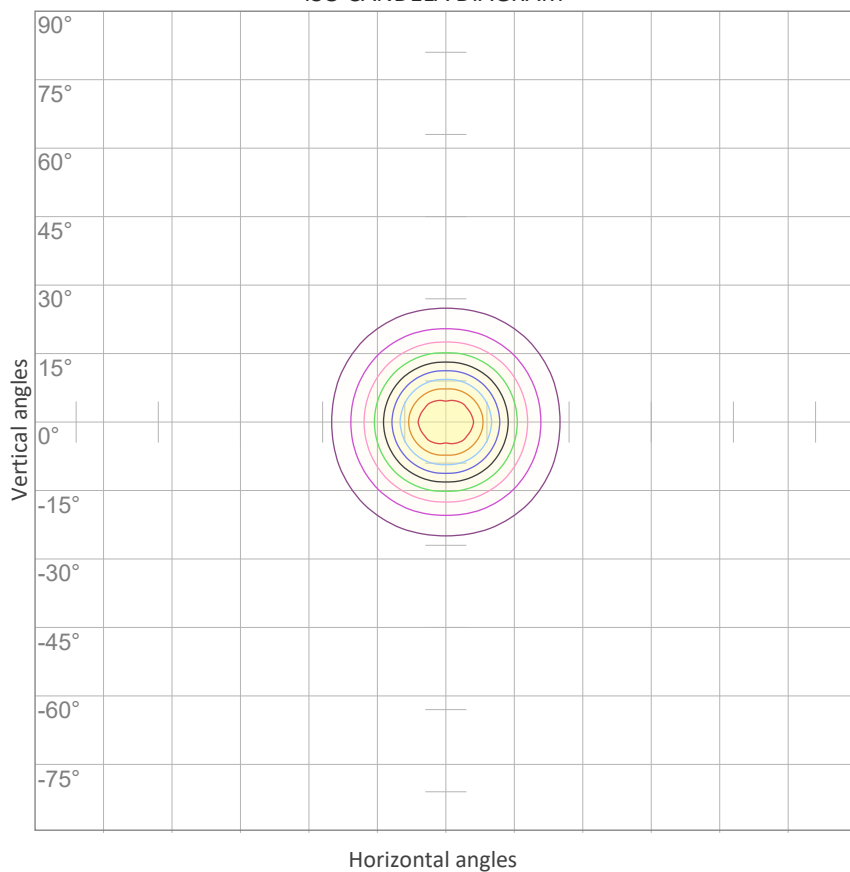
0°	2°	4°	6°	8°	10°	12°	14°	16°	18°	20°	22°	24°	26°	28°	30°	32°	34°	36°	38°
479	459	444	418	384	343	298	253	210	170	136	106	81	62	47	35	26	19	14	11
100%	96%	93%	87%	80%	72%	62%	53%	44%	36%	28%	22%	17%	13%	10%	7%	5%	4%	3%	2%

Intensities in 270° c-plane

0°	2°	4°	6°	8°	10°	12°	14°	16°	18°	20°	22°	24°	26°	28°	30°	32°	34°	36°	38°
479	488	470	442	406	362	315	267	221	180	143	111	85	64	47	35	25	19	14	10
100%	102%	98%	92%	85%	76%	66%	56%	46%	38%	30%	23%	18%	13%	10%	7%	5%	4%	3%	2%

Beam angle 50%	Field angle 10%	Cutoff angle 2,5%	Intensity ratio in 120° cone	Intensity ratio in 90° cone
29.9°	56.1°	74.5°	99.5%	98.6%

ISO CANDELA DIAGRAM



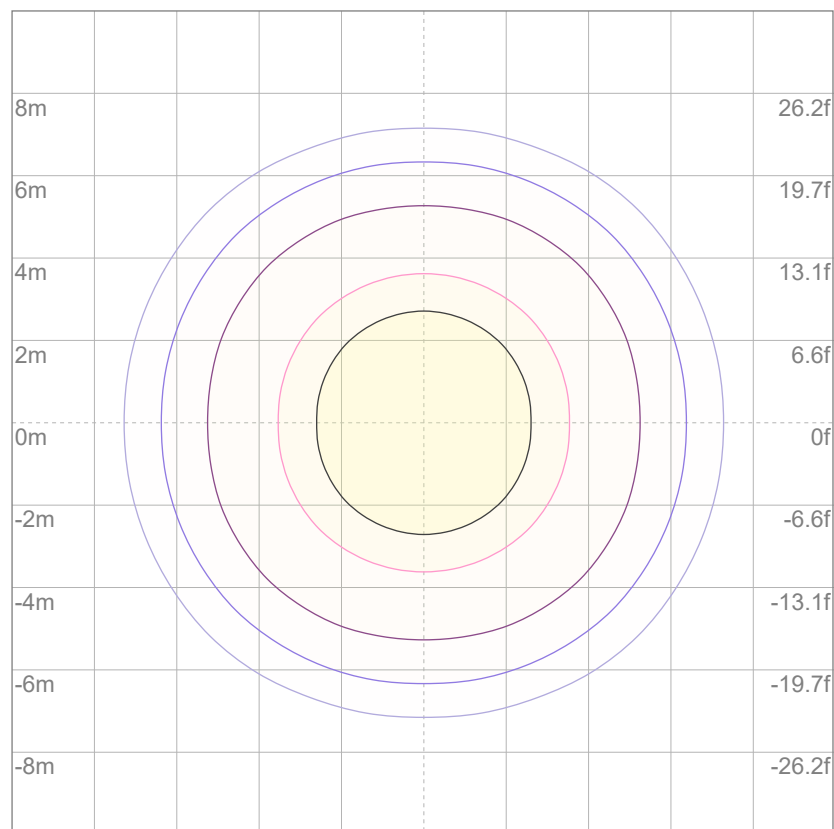
10%	48 cd
20%	96 cd
30%	144 cd
40%	192 cd
50%	240 cd
60%	287 cd
70%	335 cd
80%	383 cd
90%	431 cd

Conditions:

Number of c-planes: 8

Candela at center: 479 cd

ISO LUX DIAGRAM



3%	0.144 lx
5%	0.240 lx
10%	0.479 lx
30%	1.44 lx
50%	{LUX_10M50} lx

Conditions:

Number of c-planes: 8

Lux at center: 4.79 lx

Lux distribution on a surface when lamp is mounted at 10 meters from the surface.

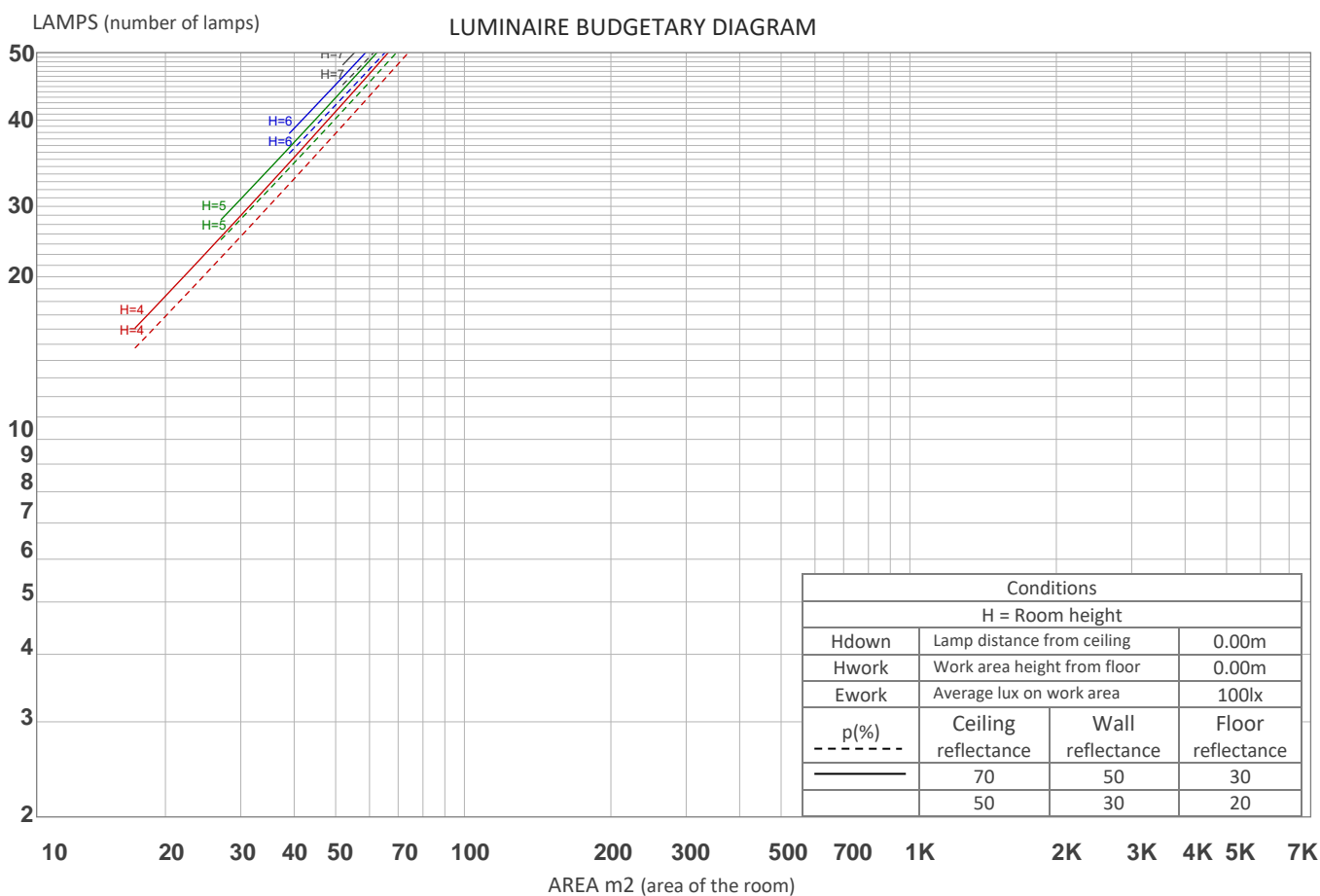
UGR

GLARE EVALUATION ACCORDING TO UGR

p Ceiling		70	70	50	50	30	70	70	50	50	30
p Walls		50	30	50	30	30	50	30	50	30	30
p Floor		20	20	20	20	20	20	20	20	20	20
Room size X Y		Viewing direction at right angles to lamp axis					Viewing direction parallel to lamp axis				
2H	2H	11.8	12.3	11.9	12.5	12.7	11.7	12.1	11.7	12.3	12.5
	3H	11.5	12.1	11.9	12.3	12.5	11.3	12.0	11.7	12.2	12.3
	4H	11.4	12.0	11.8	12.2	12.5	11.3	11.9	11.7	12.1	12.3
	6H	11.4	11.9	11.7	12.2	12.6	11.3	11.7	11.6	12.0	12.4
	8H	11.4	11.8	11.7	12.2	12.5	11.2	11.7	11.5	12.0	12.4
	12H	11.3	11.8	11.7	12.1	12.5	11.2	11.6	11.5	12.0	12.4
4H	2H	11.4	12.0	11.8	12.2	12.5	11.3	11.9	11.7	12.1	12.3
	3H	11.3	11.8	11.7	12.1	12.5	11.2	11.6	11.5	12.0	12.4
	4H	11.2	11.6	11.6	12.0	12.5	11.0	11.4	11.4	11.9	12.4
	6H	11.1	11.6	11.6	11.9	12.2	10.9	11.4	11.4	11.7	12.1
	8H	11.0	11.5	11.5	11.8	12.2	10.9	11.3	11.4	11.6	12.0
	12H	10.9	11.3	11.5	11.7	12.2	10.8	11.1	11.3	11.5	12.0
8H	4H	11.0	11.5	11.5	11.8	12.2	10.9	11.3	11.4	11.6	12.0
	6H	10.9	11.2	11.5	11.7	12.2	10.8	11.1	11.3	11.5	12.1
	8H	10.9	11.2	11.5	11.7	12.3	10.8	11.0	11.3	11.5	12.2
	12H	10.9	11.0	11.5	11.6	12.2	10.7	10.9	11.3	11.4	12.0
12H	4H	10.9	11.3	11.5	11.7	12.2	10.8	11.1	11.3	11.5	12.0
	6H	10.9	11.1	11.5	11.7	12.3	10.8	11.0	11.3	11.5	12.2
	8H	10.9	11.0	11.5	11.6	12.2	10.7	10.9	11.3	11.4	12.0
Variation of the observer position for the luminaire distance S											
S = 1.0H		5.7 / -15.3					5.7 / -14.7				
S = 1.5H		8.4 / -21.3					8.4 / -20.7				
S = 2.0H		10.4 / -22.6					10.4 / -22.4				
Standard table		n/a					n/a				
Correction summand		n/a					n/a				
Corrected glare indices referring to 155 lm total luminous flux											

COEFFICIENTS OF UTILIZATION

Ceiling reflectance	80				70				50			30			10			0
Wall reflectance	70	50	30	10	70	50	30	10	50	30	10	50	30	10	50	30	10	0
Floor reflectance	20	20	20	20	20	20	20	20	20	20	20	20	20	20	20	20	20	0
RCR	(RCR: Room Cavity Ratio) Room Values are expressed as percentage of Lumens delivered to the task surface																	
0	119	119	119	119	116	116	116	116	111	111	111	106	106	106	102	102	102	100
1	114	112	110	108	112	110	108	106	106	104	103	102	101	100	99	98	97	95
2	110	106	103	100	108	105	102	99	101	99	97	98	96	95	96	94	93	91
3	106	101	97	94	104	100	96	93	97	94	91	95	92	90	92	90	89	87
4	102	96	92	88	101	95	91	88	93	90	87	91	88	86	89	87	85	84
5	99	92	87	84	97	91	87	84	89	86	83	88	85	82	86	84	81	80
6	95	88	83	80	94	87	83	80	86	82	79	85	81	79	83	80	78	77
7	92	85	80	77	91	84	79	76	83	79	76	82	78	76	81	78	75	74
8	89	81	77	73	88	81	76	73	80	76	73	79	75	73	78	75	72	71
9	86	78	74	71	85	78	73	70	77	73	70	76	73	70	75	72	70	69
10	83	76	71	68	82	75	71	68	74	70	68	74	70	68	73	70	67	66



ZONAL LUMEN SUMMARY

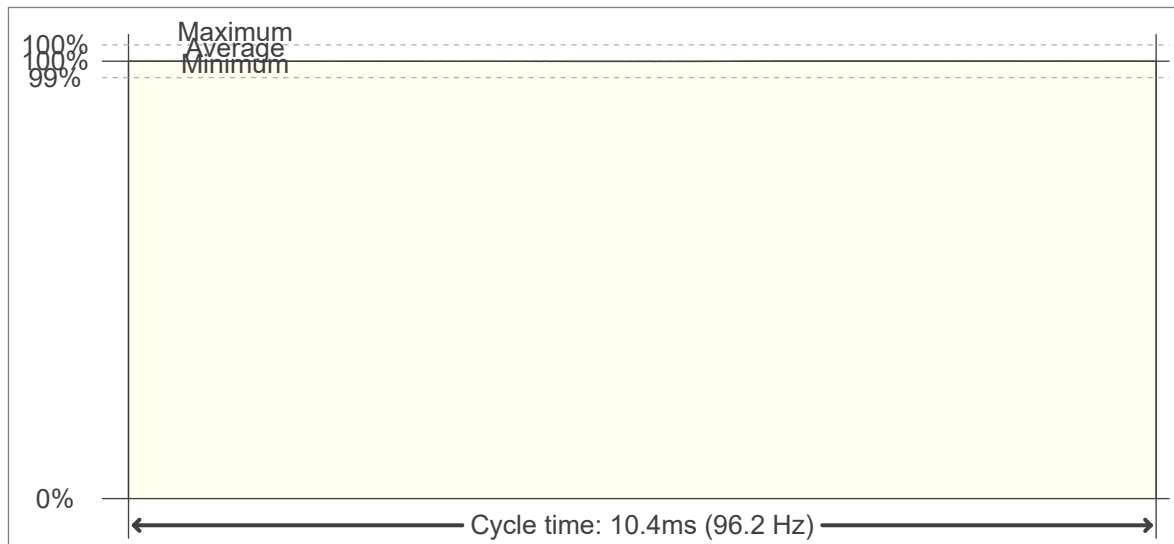
0°-10°	10°-20°	20°-30°	30°-40°	40°-50°	50°-60°	60°-70°	70°-80°	80°-90°
39.5 lm	65.2 lm	35.1 lm	11.3 lm	2.94 lm	0.534 lm	0.078 lm	0.037 lm	0.037 lm
90°-100°	100°-110°	110°-120°	120°-130°	130°-140°	140°-150°	150°-160°	160°-170°	170°-180°
0.037 lm	0.040 lm	0.045 lm	0.062 lm	0.085 lm	0.111 lm	0.114 lm	0.077 lm	0.022 lm

FLICKER

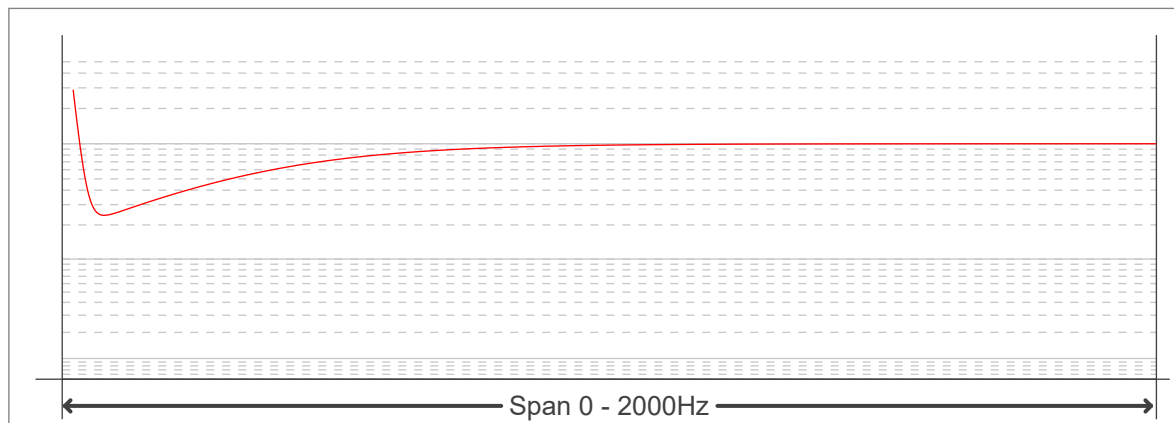
FLICKER CURVE (COMPLETE SAMPLED FLICKER)



FLICKER FRAME (FRAME OF ONE FLICKER PERIOD)



FLICKER FFT (FREQUENCY SCOPE OF FLICKER CURVE)



FLICKER RESULTS:

Flicker frequency:	96.15 Hz
Flicker index:	0
Flicker percentage:	0.09 %
SVM: (Visual flicker)	0

FLICKER CONDITIONS:

Sample rate:	20000 samples/second
--------------	----------------------